

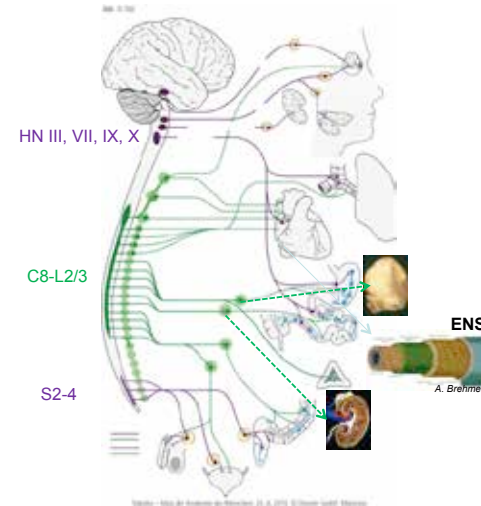
Anatomie des Sympathikus am zervikothorakalen Übergang

Praktischer Nutzen für den Manualmediziner?

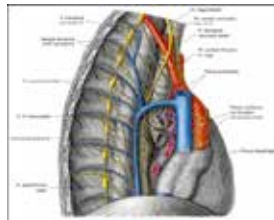
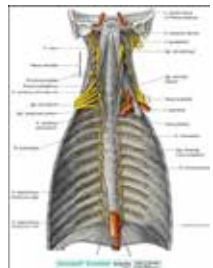
Winfried Neuhuber
 Institut für Anatomie
 Universität Erlangen-Nürnberg



Gliederung des ANS

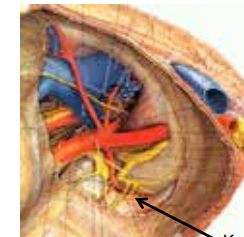
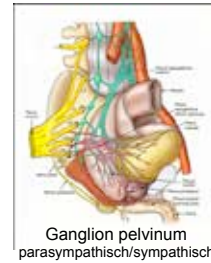
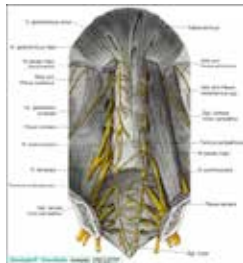


Sympathikus / Parasympathikus



Truncus sympathicus

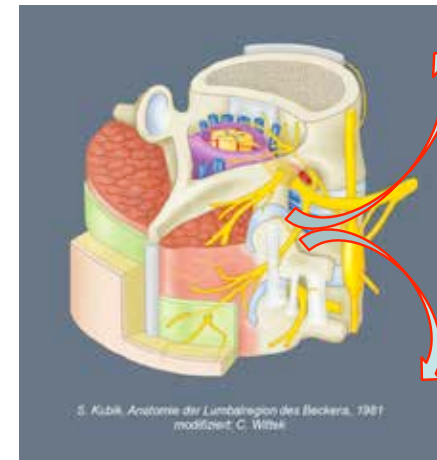
von der Schädelbasis
 bis zur Sacrumspitze



Kuntz ' Nerv

Tr. sympathicus als Verteiler von Facettengelenksafferenzen

2-6 Segmente rostrocaudal (Ohtori et al., Spine 2001, 26:147-150)

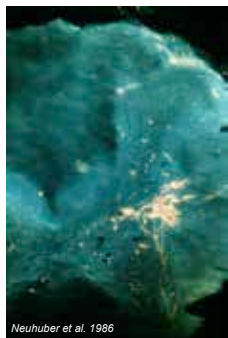


Rami communicantes

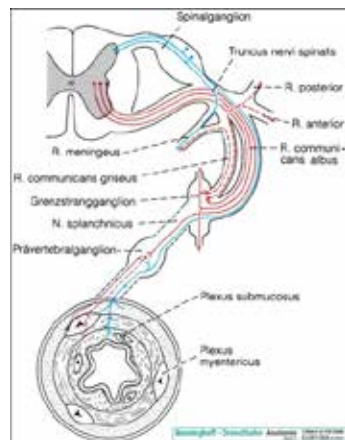
Ausgangspunkte für
R. meningei, Äste zu
Ligg. long. ant. u. post.



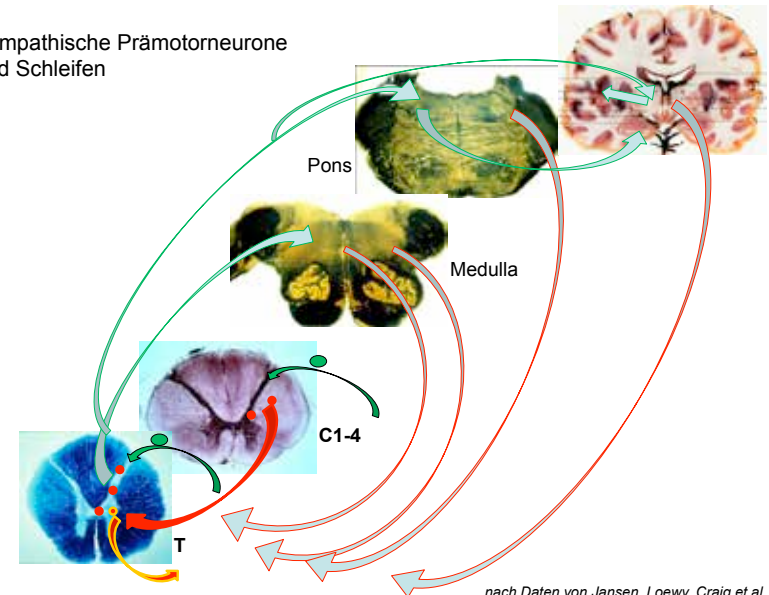
T9



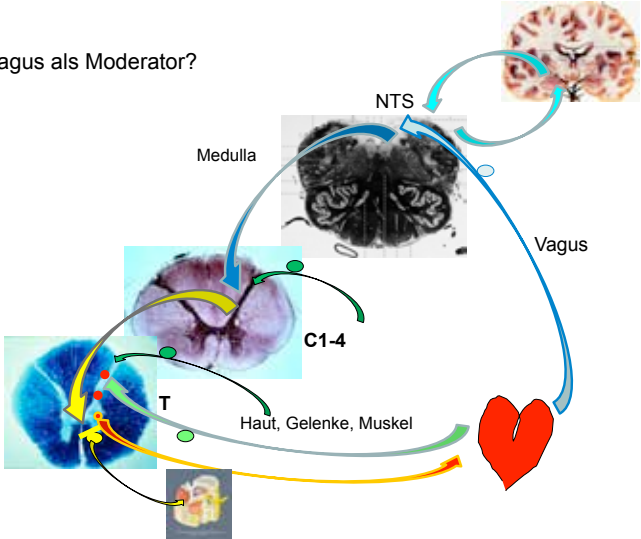
Ncll. intermediolat. et intercalatus



Sympathische Prämotorneurone und Schleifen



Der Vagus als Moderator?



nach Daten von Foreman et al.



Vielen Dank!